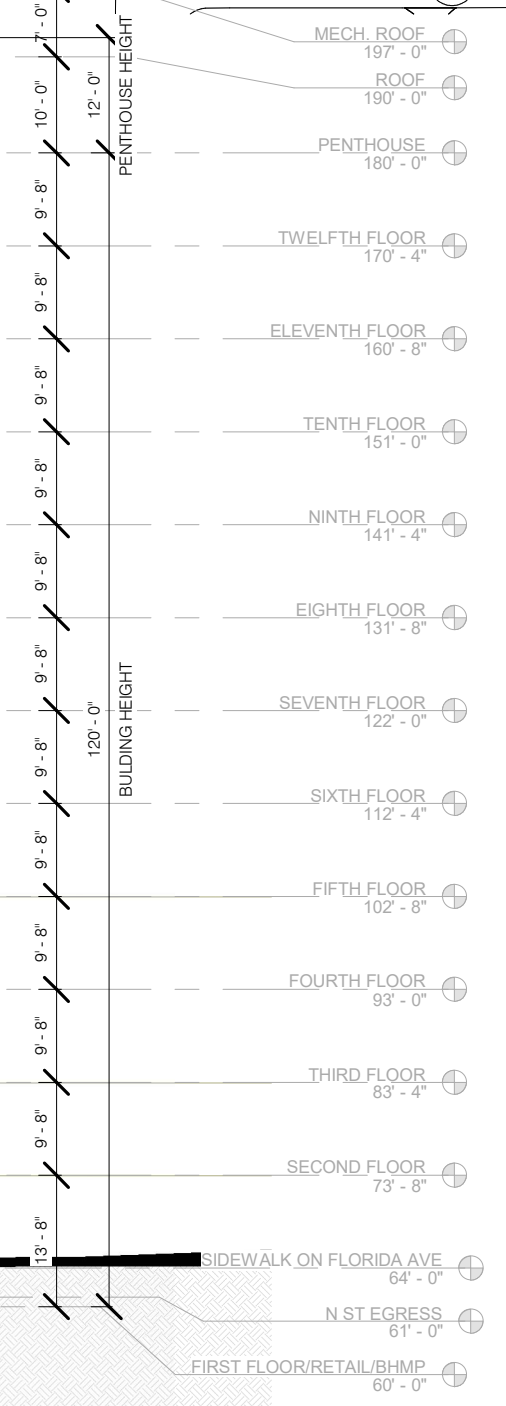
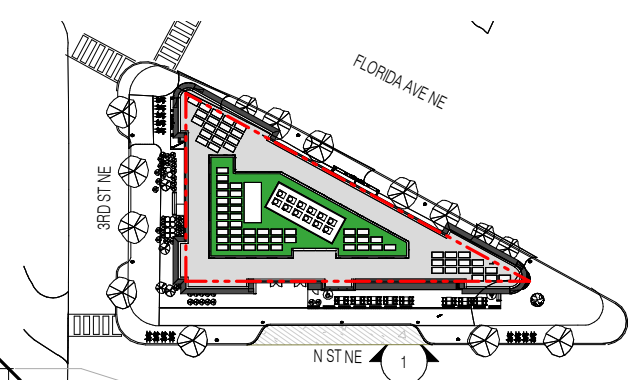


1. Flexibility is requested to vary the final selection of the exterior materials within the color ranges and material types as proposed without reducing the quality of the materials and to make minor refinements to exterior details and dimensions.
2. Flexibility is requested to vary the approved signage provided it is consistent with the indicated dimensions and materials.
3. Flexibility is requested to vary the non-residential storefront and associated features and fixtures in public space subject to individual tenant modifications.
4. Flexibility is requested to vary exterior ornamentation based on comments from National Park Service.



① N ST Elevation  
1" = 20'-0"



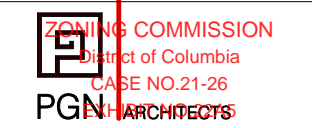
SCALE 1"=20'-0"  
N ST. ELEVATION | A.23

07/07/2022

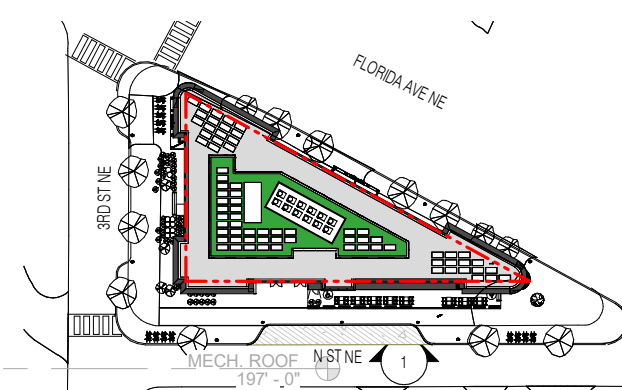
NoMA/Union Market Affordable

301 Florida Ave NE, Washington, DC 20002

COPYRIGHT © 2020 PGN ARCHITECTS, PLLC



1. Flexibility is requested to vary the final selection of the exterior materials within the color ranges and material types as proposed without reducing the quality of the materials and to make minor refinements to exterior details and dimensions.
2. Flexibility is requested to vary the approved signage provided it is consistent with the indicated dimensions and materials
3. Flexibility is requested to vary the non-residential storefront and associated features and fixtures in public space subject to individual tenant modifications
4. Flexibility is requested to vary exterior ornamentation based on comments from National Park Service



1 N ST Elevation BW  
1" = 20'-0"

NoMA/Union Market Affordable

301 Florida Ave NE, Washington, DC 20002

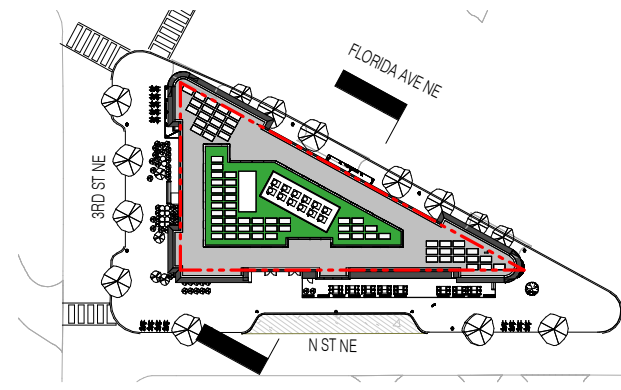
COPYRIGHT © 2020 PGN ARCHITECTS, PLLC



SCALE 1"=20'-0"  
N ST. ELEVATION BW | A.23A

07/07/2022





NoMA/Union Market Affordable

301 Florida Ave NE, Washington, DC 20002

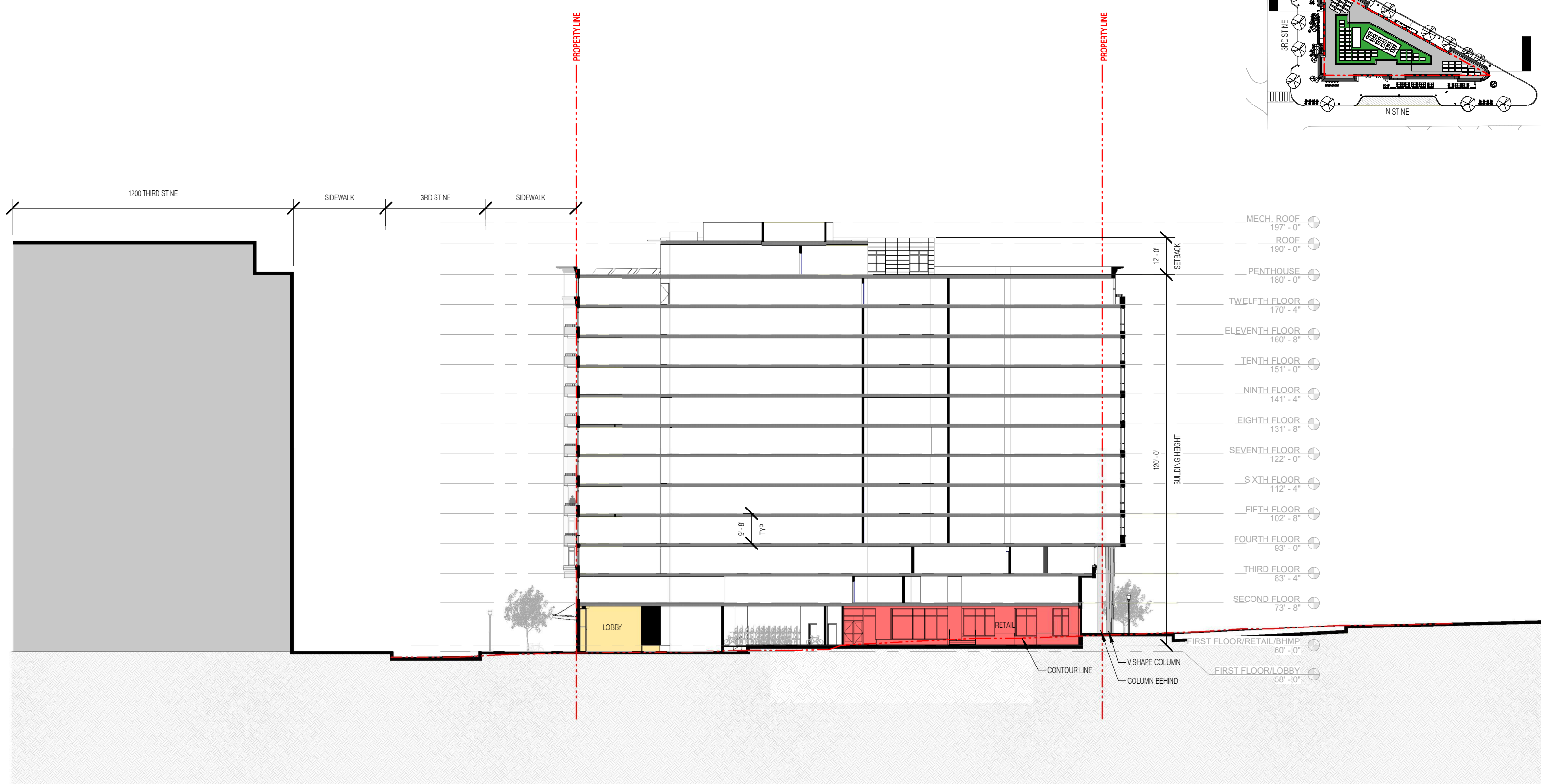
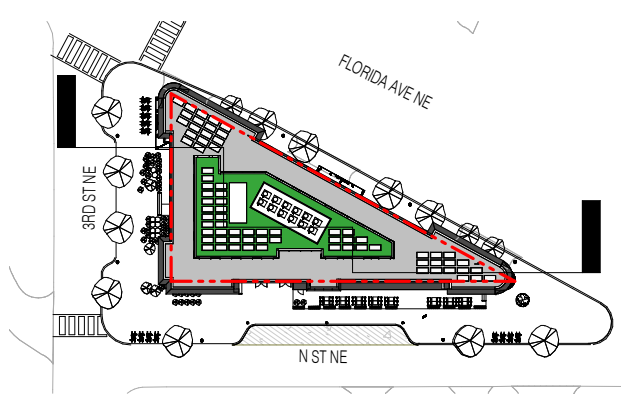
COPYRIGHT © 2020 PGN ARCHITECTS, PLLC



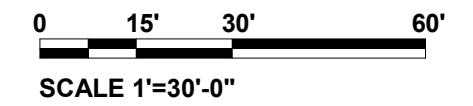
STREET SECTION | A.31

07/07/2022





- MECH. ROOF 197' - 0"
- ROOF 190' - 0"
- PENTHOUSE 180' - 0"
- TWELFTH FLOOR 170' - 4"
- ELEVENTH FLOOR 160' - 8"
- TENTH FLOOR 151' - 0"
- NINTH FLOOR 141' - 4"
- EIGHTH FLOOR 131' - 8"
- SEVENTH FLOOR 122' - 0"
- SIXTH FLOOR 112' - 4"
- FIFTH FLOOR 102' - 8"
- FOURTH FLOOR 93' - 0"
- THIRD FLOOR 83' - 4"
- SECOND FLOOR 73' - 8"
- FIRST FLOOR/RETAIL/BHMP 60' - 0"
- FIRST FLOOR/LOBBY 58' - 0"



NoMA/Union Market Affordable

301 Florida Ave NE, Washington, DC 20002

FLORIDA AVE STREET SECTION | A.32

COPYRIGHT © 2020 PGN ARCHITECTS, PLLC

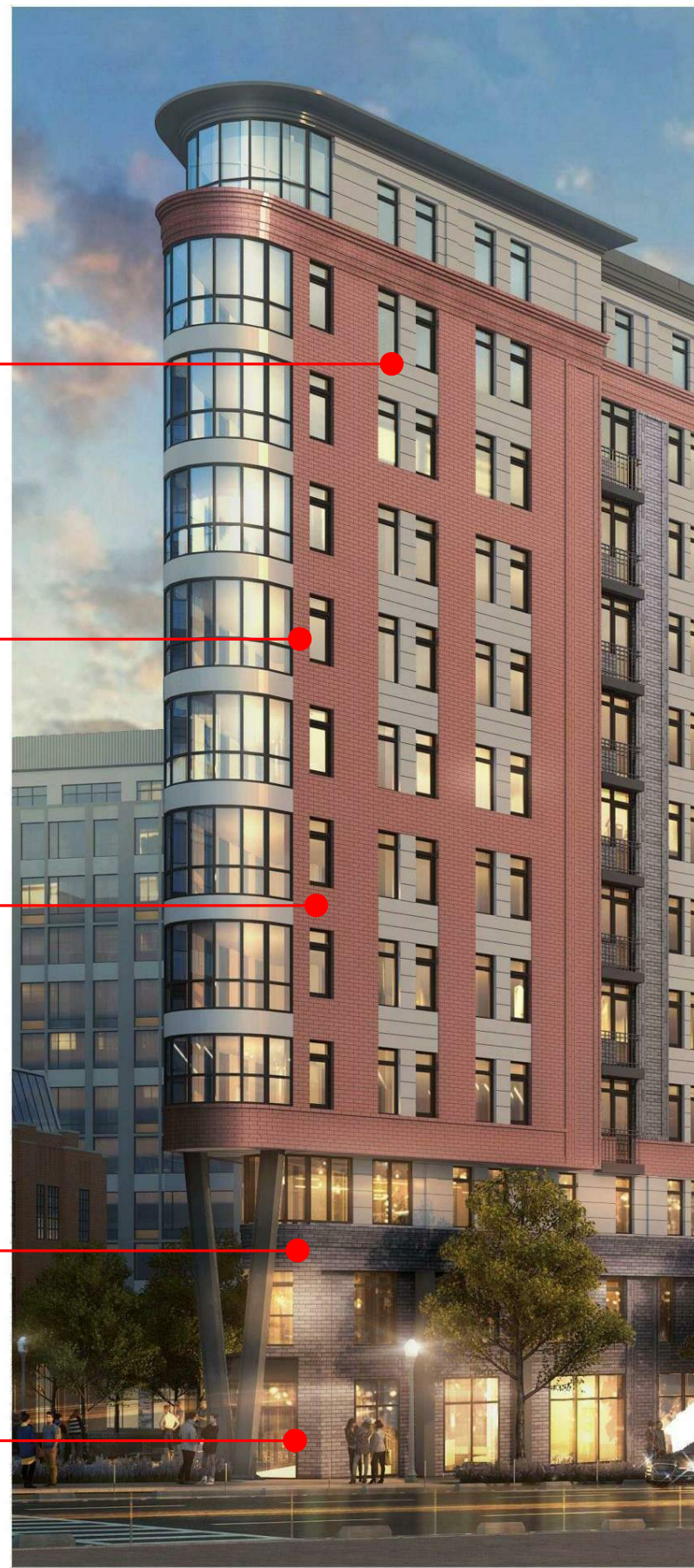


07/07/2022

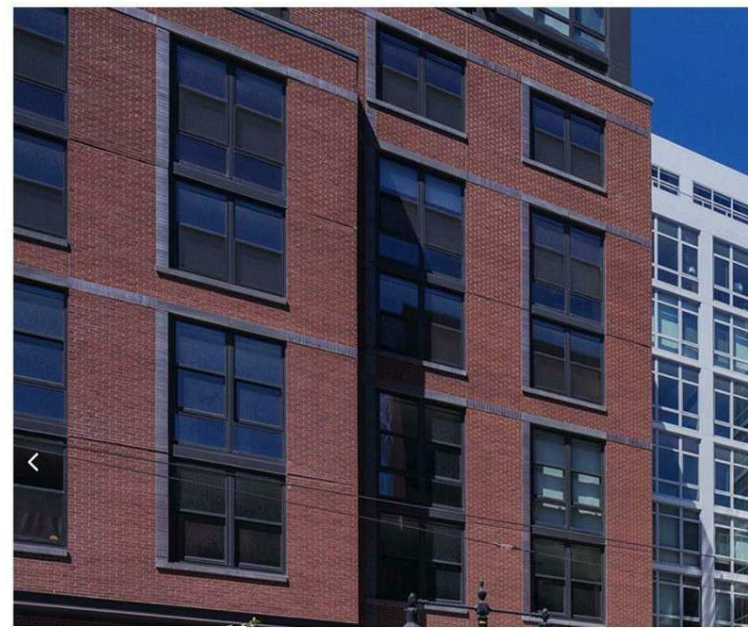




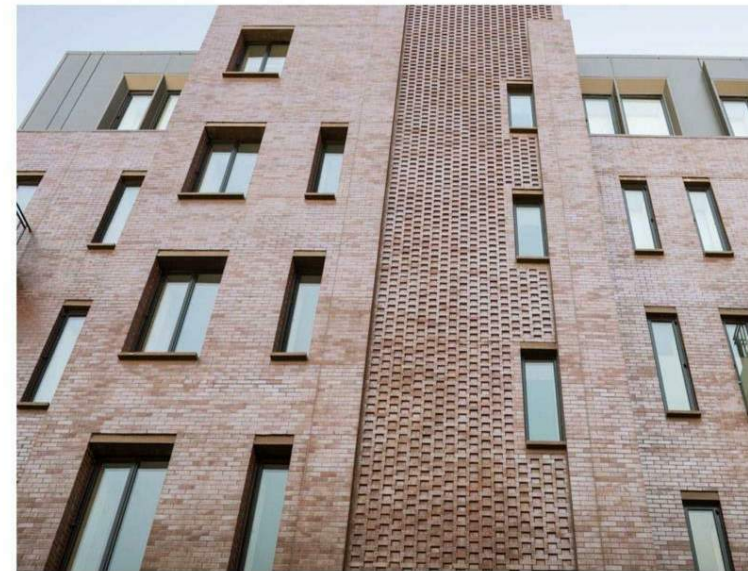
FLAT IRON CLASSIC



RENDERING DETAIL



PRECEDENT IMAGE



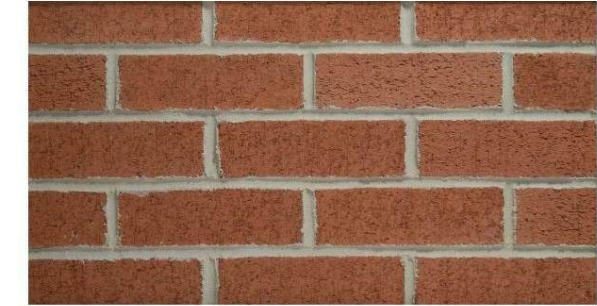
PRECEDENT IMAGE



PRECEDENT IMAGE



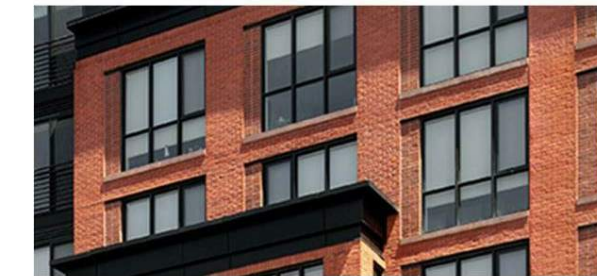
1



2



3



4



5

NoMA/Union Market Affordable

301 Florida Ave NE, Washington, DC 20002

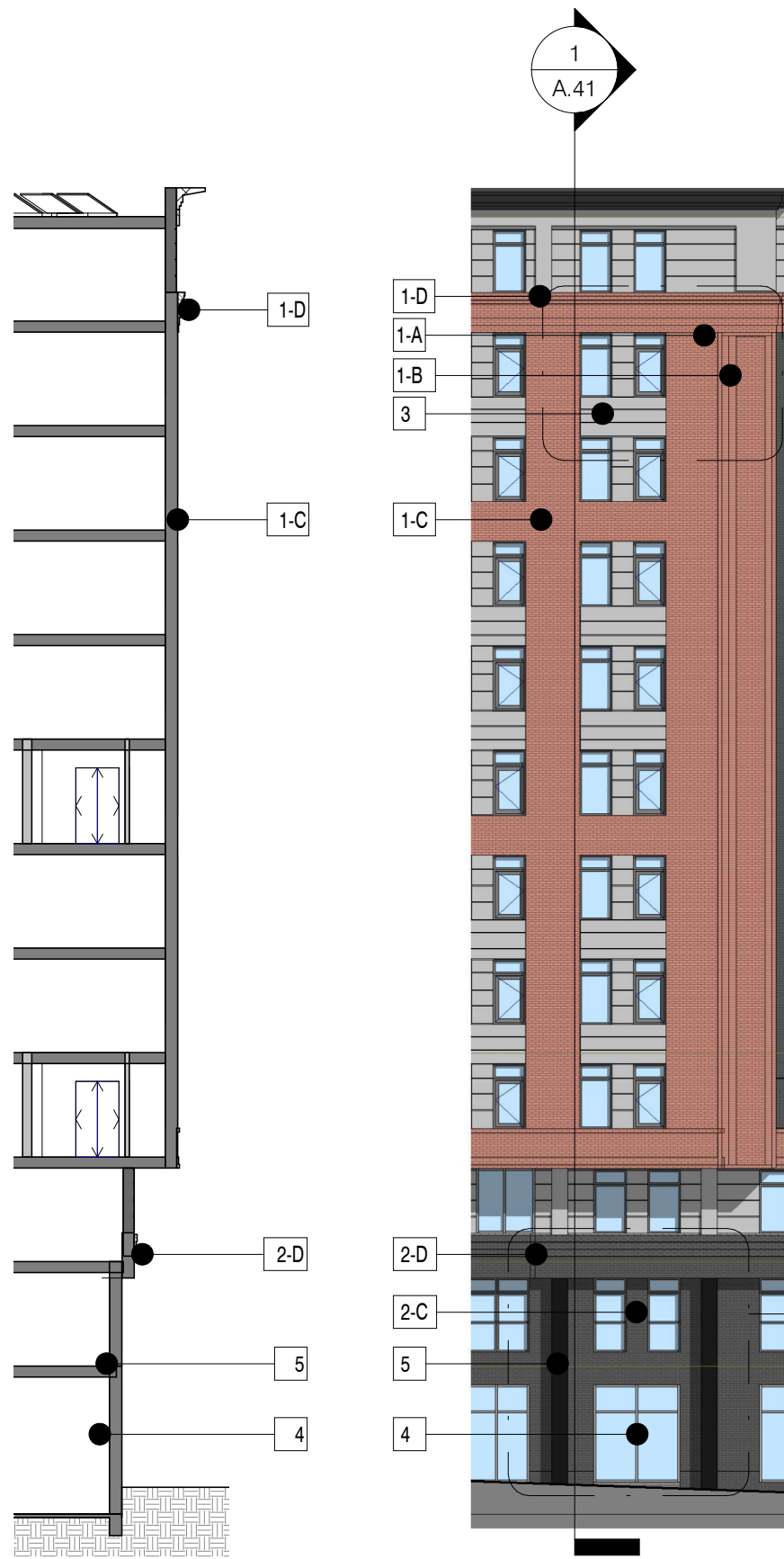
COPYRIGHT © 2020 PGN ARCHITECTS, PLLC



PRECEDENT MATERIAL DETAIL | A.40

07/07/2022

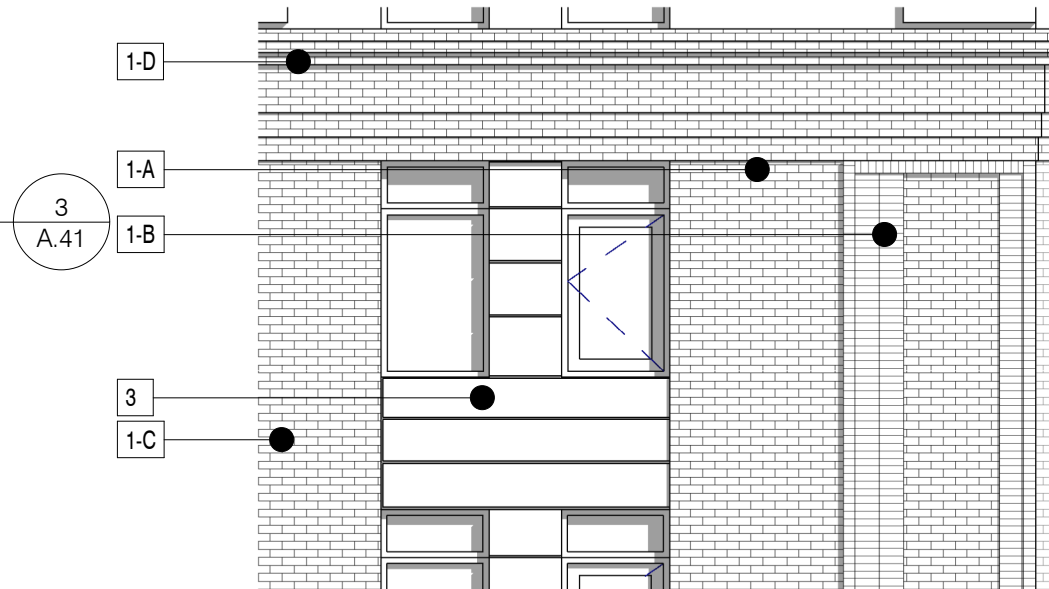




1 Partial Section 1  
1/16" = 1'-0"



2 Partial Elevation 1  
1/16" = 1'-0"



3 Partial Elevation 1 - Callout 1  
3/16" = 1'-0"



4 Partial Elevation 1 - Callout 2  
3/16" = 1'-0"



1. CONTINENTAL BRICK COMPANY  
STD. 416 MOD.  
A. SOLDIER BRICK PATTERN  
B. STACK BRICK PATTERN  
C. RUNNING BOND STANDARD BRICK  
D. BRICK CORNICE



2. GLEN-GERY \_ EBONITE SMOOTH  
A. SOLDIER BRICK PATTERN  
B. STACK BRICK PATTERN  
C. RUNNING BOND STANDARD BRICK  
D. BRICK CORNICE



3. NICHHA\_DESIGN SERIES\_FOG



4. STOREFRONT

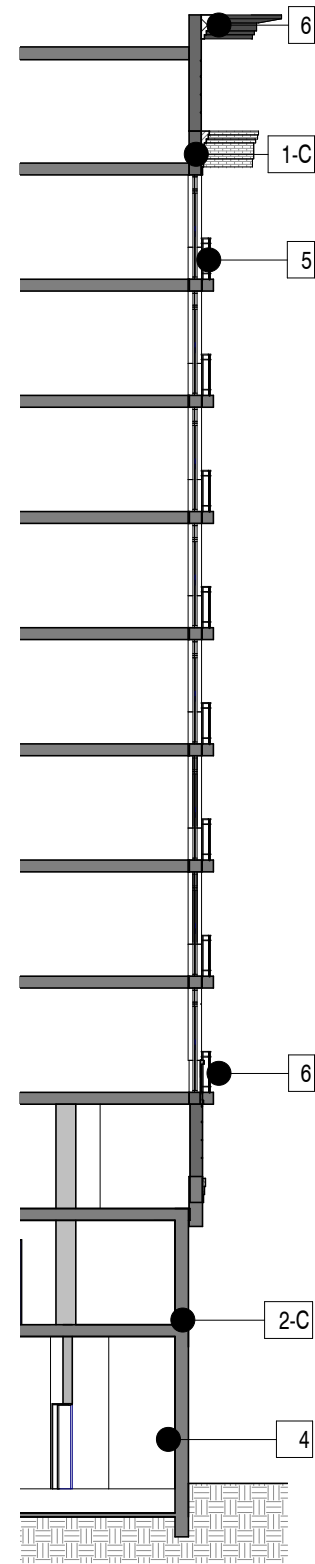


5. PAINTED CONCRETE COLUMN

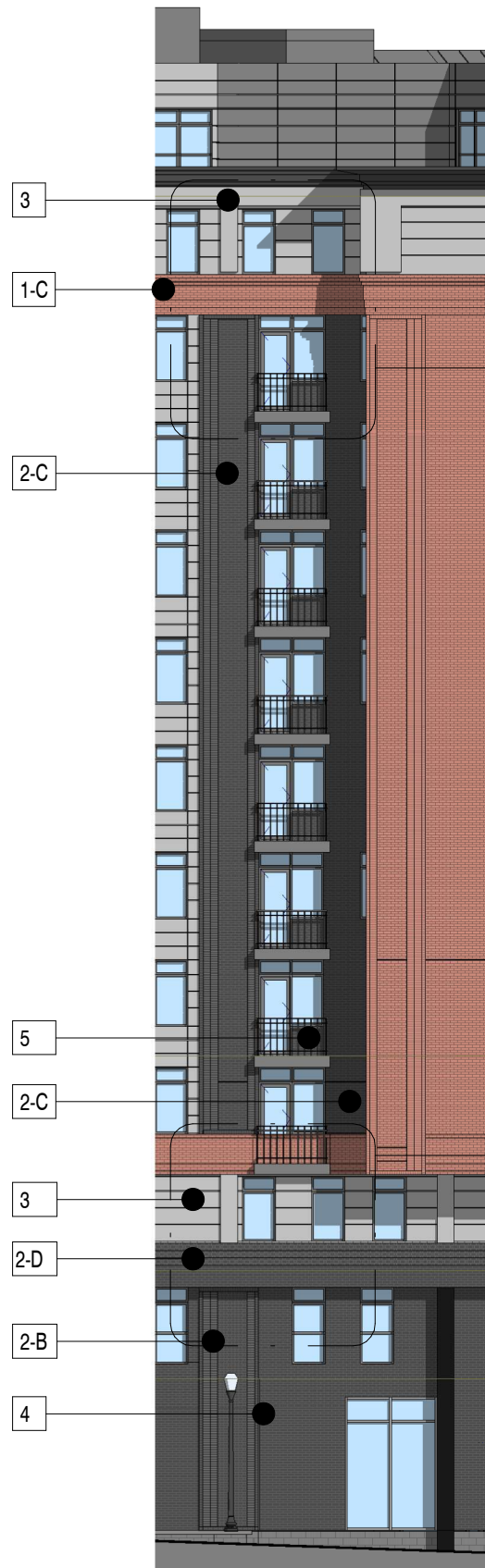


6. STONE BASE

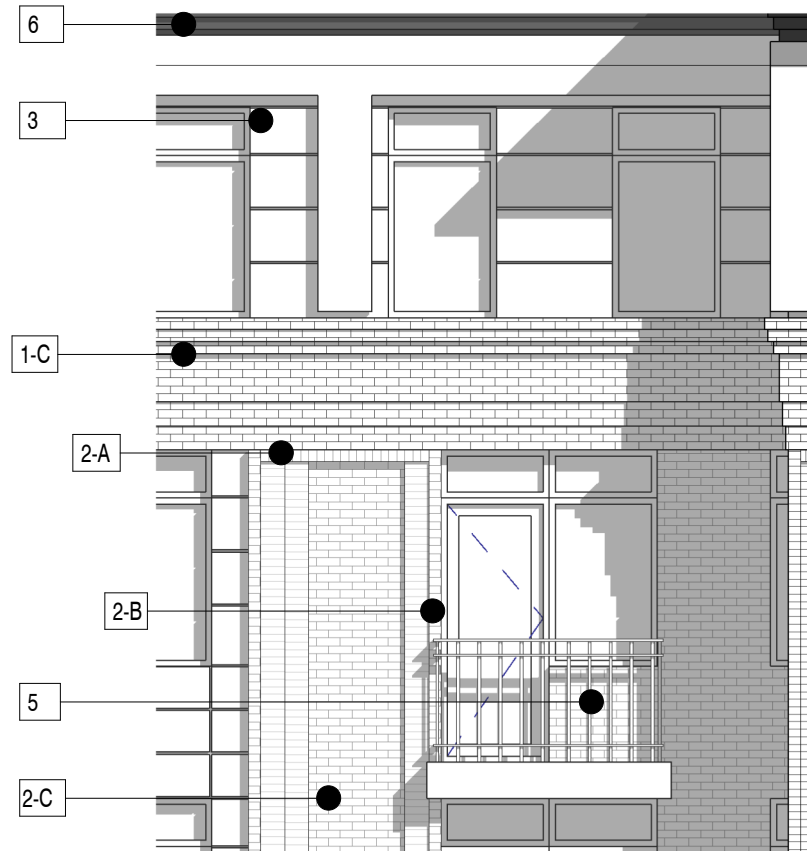
1. Flexibility is requested to vary the final selection of the exterior materials within the color ranges and material types as proposed without reducing the quality of the materials and to make minor refinements to exterior details and dimensions.
2. Flexibility is requested to vary the approved signage provided it is consistent with the indicated dimensions and materials
3. Flexibility is requested to vary the non-residential storefront and associated features and fixtures in public space subject to individual tenant modifications
4. Flexibility is requested to vary exterior ornamentation based on comments from National Park Service
5. Flexibility is requested to vary the window frames to light grey, grey or black



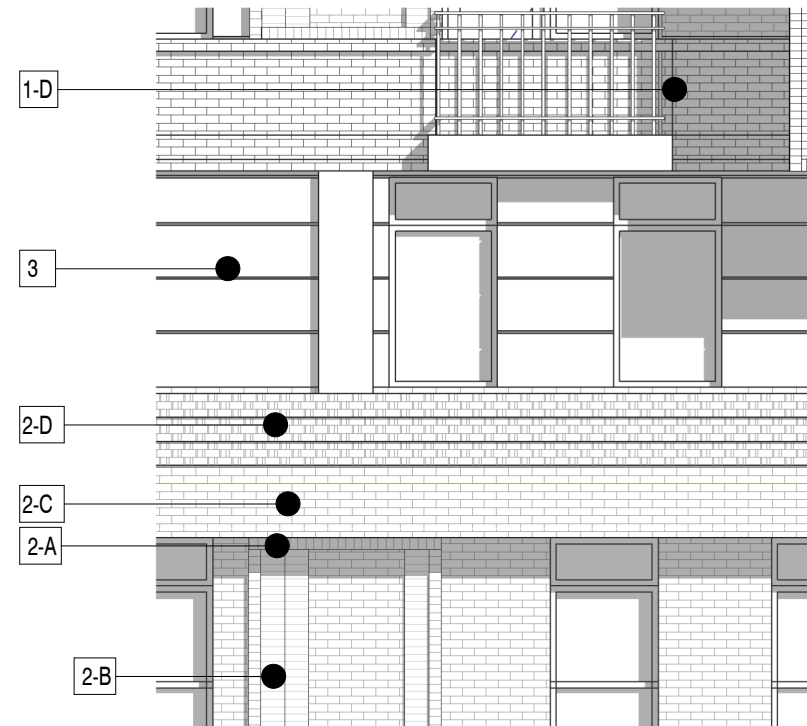
① Partial Section 2  
1/16" = 1'-0"



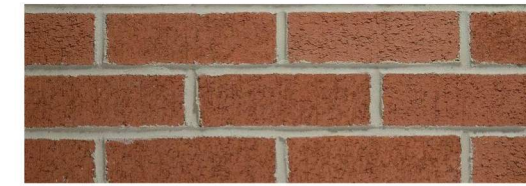
② Partial Elevation 2  
1/16" = 1'-0"



③ Partial Elevation 2 - Callout 1  
3/16" = 1'-0"



④ Partial Elevation 2 - Callout 2  
3/16" = 1'-0"



1. CONTINENTAL BRICK COMPANY  
STD. 416 MOD.

- A. SOLDIER BRICK PATTERN
- B. STACK BRICK PATTERN
- C. RUNNING BOND STANDARD BRICK
- D. BRICK CORNICE



2. GLEN-GERY  
EBONITE SMOOTH

- A. SOLDIER BRICK PATTERN
- B. STACK BRICK PATTERN
- C. RUNNING BOND STANDARD BRICK
- D. BRICK CORNICE



3. NICHIBA DESIGN SERIES\_FOG



4. STOREFRONT



5. METAL BALCONY /  
JULIETTE RAILING



6. METAL COPING SYSTEM

1. Flexibility is requested to vary the final selection of the exterior materials within the color ranges and material types as proposed without reducing the quality of the materials and to make minor refinements to exterior details and dimensions.  
 2. Flexibility is requested to vary the approved signage provided it is consistent with the indicated dimensions and materials  
 3. Flexibility is requested to vary the non-residential storefront and associated features and fixtures in public space subject to individual tenant modifications  
 4. Flexibility is requested to vary exterior ornamentation based on comments from National Park Service  
 5. Flexibility is requested to vary the window frames to light grey, grey or black